


Great Lakes Border Health Initiative



A Study in Multijurisdictional Collaboration

Katherine Allen-Bridson, RN, BSN, CIC


6/22/2006 1

Partners:

- State and Provincial Departments of Health: MI, MN, NY, Ontario, WI
- Tribal Health Organizations
- Local Health Departments
- Border Area Hospitals
- CDC, Public Health Agency of Canada

6/22/2006 2

Structure



```

graph TD
    SC[STEERING COMMITTEE] --> DC[Direct Care]
    SC --> Lab[Laboratory]
    SC --> Legal[Legal]
    DC --> ER[Emergency Response]
    Lab --> PHC[PH Communications]
  
```

6/22/2006 3


Key Personnel

- Medical Officers of Health
- CD Nurses
- Alerting Systems Coordinators
- Epi personnel
- Laboratorians
- Emergency Health Planners
- Infection Control Practitioners
- Public health policy specialists



6/22/2006 4


Border Health Assessment Findings



- Major Differences in Public Health Structure: Ontario vs. Michigan
- Defining moments or events in public health delivery in recent past
- Communication systems/questions
- Surge Capacity issues

6/22/2006 5


Border Health Assessment Findings



- Memorandum of Understanding or Agreement (MOU or MOA)
 - ◆ Vital
 - ◆ International issue
 - ◆ Require legal and public health experts

6/22/2006 6


Terms of Reference



“Where there is no purpose,
people perish.” Proverbs

6/22/2006 7

Mandates and Key Tasks



1. To identify opportunities to improve collaborative early warning infectious disease surveillance and surveillance information sharing
2. To reach agreement regarding the type of early warning infectious disease information to be shared and the manner in which it will be shared.
3. To explore the development of a MOU for resource sharing, and to identify opportunities for additional collaboration.

6/22/2006 8

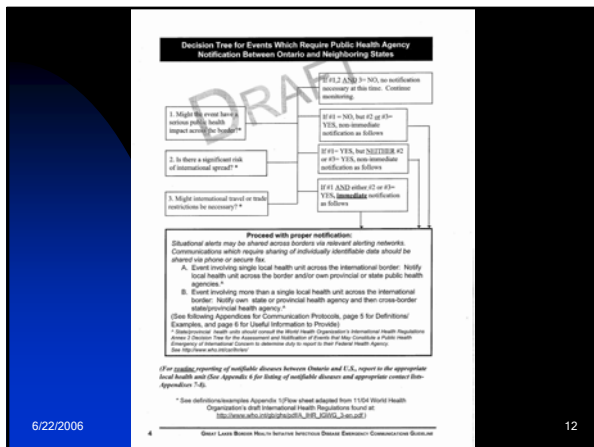
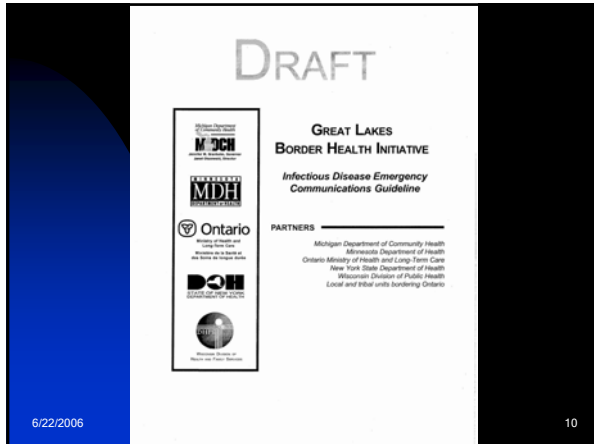
Major Efforts

Communications



- Communication Arrangement between Province and States:
 - Communication Guideline
 - Decision Tree
 - State/Provincial Call Protocols
 - Contact Lists
 - Comparative List of Reportable Conditions
- Surveillance compatibility and connectivity
- Alerting Systems


6/22/2006 9



Major Efforts

Legal


- Collection, Organization and Review of existing legislation related to international agreements
- Development of a data sharing arrangement
- Identification of legislation pertinent to Memorandum of Understanding between Ontario and involved States



6/22/2006 19

Major Efforts


Direct Care



- Survey of border area hospitals reliance on cross-border staff.
- Development of Contingency Plans for large numbers of HCWs unable to report to work.
- Development of Templates for HAN alert distribution within hospitals.

6/22/2006 20

Major Efforts



- Collaboration with tribal health
 - ◆ Tribes located along the Canada-U.S. border S
 - ◆ Some in-person invitations have taken place
 - ◆ Formal written invitations made

6/22/2006 21

GLBHI Conferences

- 3rd annual slated for August 24-25, 2006
- Provides opportunity for face to face collaboration, updates, education and tabletop exercise

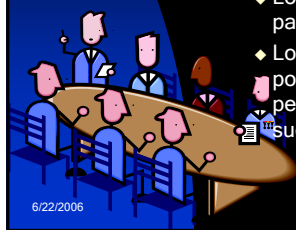


6/22/2006

22

Lessons Learned

- Structural Issues:
 - ◆ Labor intensive.
 - ◆ Long Term. Need consistency of participants.
 - ◆ Long-distance initiatives can pose challenges. Some in-person meetings are vital to the success of the project.

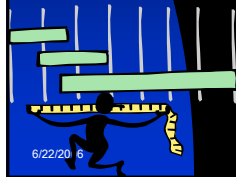


6/22/2006

23

Lessons Learned

- Short, Mid and Long Term Goals.
 - ◆ "Don't think of action as a single stage of activity at the end of which there is a final product."
- Deal with group dynamics.




6/22/2006

24

Lessons Learned

- Relationship Issues:
 - ◆ Learn about the other's organizations and how this impacts their participation.
 - ◆ Flexibility is key.
 - ◆ Stress the need to be direct; Share your reasoning for views with others.



6/22/2006 25

PATIENCE IS A VIRTUE

- Katherine Allen-Bridson, RN, BSN, CIC
- Border Health Program Coordinator
- Michigan Department of Community Health
- 517-335-8199
- Allen-bridsonk@michigan.gov

6/22/2006 26
