



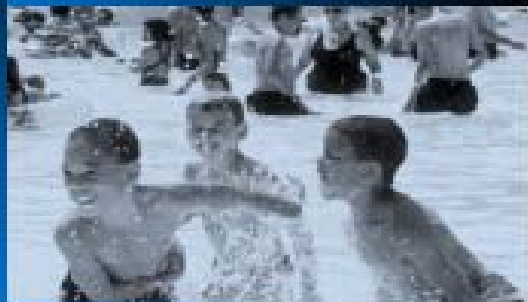
Experiences from Respiratory Protection Program Managers

November 6, 2008

Natalie Gaydos, CIH
PPG Industries



AN INTRODUCTION



 **PPG Industries**



**SEE
IT'S
PPG**
TM



PPG Is . . .



- ◆ A leading global manufacturer of *coatings, glass, fiberglass, and chemicals*, which find their way into a diverse arena of consumer and commercial products
- ◆ Founded in 1883
- ◆ Headquartered in Pittsburgh, PA.
- ◆ Owned by 100,000 shareholders, including 25,000 employees and retirees





PPG Is . . .



- ◆ Operator of more than **150** production facilities
- ◆ Approximately 34,000 employees in more than 60 countries
- ◆ 2007 Financial Data
 - Net Sales **\$11 Billion**
 - Net Income **\$ 834 Million***

PPG Is . . .

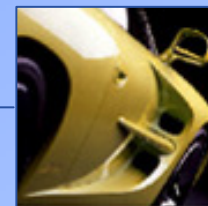


2007 Sales by Business Group

Coatings

67%

- Aerospace
- Architectural Coatings
- Automotive OEM
- Automotive Refinish
- Industrial Coatings
- Packaging Coatings
- Protective and Marine



Chemicals

23%

- Optical Products
- Silicas Chlor-Alkali Products & Derivatives
- Specialty Chemicals



Glass

10%

- Aircraft Products
- Flat Glass Products
- Fiber Glass Electronic & Specialty Materials





Respirator Use at PPG

- ◆ Extensive
 - Required Use
 - Voluntary Use
- ◆ Filtering Facepieces to Supplied Air
- ◆ Consistent Requirements Globally
- ◆ Respirator Program Administrators at Each Using Site



Respirator Fit

- ◆ What constitutes good respirator fit?
- ◆ What is happening with fit in the field?
- ◆ What should be the focus for a better fitting respirator?



What constitutes a good fit?

- ◆ A good mask to face seal with maximum comfort
- ◆ Comfortable secure snug fit
- ◆ Comfortable feel on the face
- ◆ Proper fitting around the nose piece and straps used properly

What difficulties have you encountered in getting a good fit?



- ◆ Facial contours and size, shape of face
- ◆ Width of bridge of nose
- ◆ Straps not placed properly
- ◆ Missing teeth
- ◆ Missing dentures

What are some of the common reasons for fit test failure?



- ◆ Inability to taste or smell the testing agent
- ◆ Not completely clean shaven
- ◆ Straps not tightened enough
- ◆ Nose piece not in proper place
- ◆ Leakage at bridge of nose
- ◆ Small face, unique facial features

Does Respirator Fit Change from Year to Year with your Employees?



- ◆ No
- ◆ Yes, when people lose or gain weight, their face changes
- ◆ Yes, when people get older, their face changes



Should annual fit testing be required?

- ◆ No, every two years, unless weight gain or loss, change in facial features, change in health status
- ◆ Annually if over 55 or if wearer has had extensive dental work
- ◆ Yes, when people get older, their face changes
- ◆ Yes, this is an opportunity to talk with the wearer one-on-one about the requirements of the respirator program.

What features of current respirator design need further improvement?



- ◆ Design for allowance of more facial hair
- ◆ Better designed nose piece
- ◆ Better designed chin cups
- ◆ Better designed face piece
- ◆ Better designed neck straps
- ◆ Better straps that do not tear and maintain elasticity
- ◆ Disposable respirator that is more resilient in a high heat environment
- ◆ Should be made of soft, pliable material



Questions??